

THE CONFINEMENT DRAWINGS

Jorge Nesbitt

EXPOSIÇÃO / EXHIBITION / EXPOSITION ONLINE

15.05.20 – 13.06.20



THE CONFINEMENT DRAWINGS

Jorge Nesbitt

EXPOSIÇÃO ONLINE

15.05.20 – 13.06.20

“De repente, achei fascinante a ideia de começar um desenho e não saber o que vai sair. Normalmente até trabalho em dois desenhos exatamente por isso. Isto porque, quando começo um desenho por vezes parece completamente impossível que venha a funcionar a princípio. Quando isto acontece para esse desenho, começo outro e quando volto ao de origem, ao primeiro desenho, surgem normalmente soluções de composição inesperadas.”

Jorge Nesbitt

A galeria **Rui Freire - Fine Art** tem o gosto de anunciar a exposição online **‘The Confinement Drawings’** do artista **Jorge Nesbitt**. Apresentamos uma seleção de novos desenhos a grafite realizados pelo artista desde o início da pandemia global do coronavírus.

Este grupo de trabalhos tem como ponto de partida um grupo de desenhos de Picasso do final da década de 1920, realizados - em Cannes e em Dinard - durante o verão. Estes desenhos de bloco sempre fascinaram Jorge Nesbitt, tanto pela inventividade formal como pelo especto escultórico que possuem.

Jorge Nesbitt começou por realizar uma série de pequenas figuras em barro compostas por sobreposições de esferas, de pequenos seixos e daquilo que parecem ser ossos alisados.

Estas formas-objeto, empilhadas umas sobre as outras em arranjos precários, criam um enigmático equilíbrio estático que as aproximam formalmente dos dolmens antigos conferindo-lhes um especto lúdico, que agrada particularmente ao artista.

A partir destas figuras, Jorge Nesbitt começa a desenhar de memória em pequenos blocos, sem uma ideia predefinida do resultado final. Este processo revela-se propício ao surgimento de respostas formais inesperadas, exercendo um fascínio particular no artista. É neste contexto que surge este fascinante conjunto de desenhos a grafite.

A originalidade e o carácter muito pessoal do trabalho de Jorge Nesbitt nasce desta complexa combinação de afinidades artísticas e literárias, associadas a uma versatilidade técnica notável.

É também deste modo que as suas obras se inscrevem no seu tempo, com a dose certa de humor e poesia que se revelam indispensáveis, sobretudo numa altura em que o artista não teve oportunidade de ir ao atelier, como habitualmente.

A exposição online **‘The Confinement Drawings’** é a segunda apresentação individual de **Jorge Nesbitt** na galeria.

Para mais informações sobre o artista ou esta exposição, por favor contacte: info@rui-freire.com



THE CONFINEMENT DRAWINGS

Jorge Nesbitt

ONLINE EXHIBITION

15.05.20 – 13.06.20

"Suddenly, I found the idea of starting a drawing and not knowing what will come out fascinating. I usually even work on two drawings exactly for that. That's because when I start a drawing sometimes it seems completely impossible that it will work at first. When this happens I stop that drawing, I start another one and when I go back to the original one, to the first drawing, unexpected composition solutions usually appear."

Jorge Nesbitt

The gallery **Rui Freire - Fine Art** is pleased to announce the online exhibition **'The Confinement Drawings'** by artist **Jorge Nesbitt**. The exhibition presents a selection of new graphite drawings created by the artist since the beginning of the global coronavirus pandemic.

This group of works has as its starting point a group of drawings by Picasso from the late 1920's, made - in Cannes and Dinard - during the summer. These sketch-book drawings have always fascinated Jorge Nesbitt, both for their formal inventiveness and for their sculptural presence.

Jorge Nesbitt began by making a series of small clay figures composed of overlapping spheres, small pebbles and what appear to be smoothed bones.

These object-forms, propped and piled onto each other in precarious arrangements, create an enigmatic static balance reminiscent of ancient dolmens and give them a playful appearance that particularly pleases the artist.

From these figures, Jorge Nesbitt begins to draw from memory in a small sketch-book, without a predefined idea of the final result. This process proves to be conducive to the emergence of unexpected formal responses, exerting a particular fascination on the artist. It is in this particular context that this fascinating set of graphite drawings emerges.

The originality and very personal character of Jorge Nesbitt's work is born from this complex combination of artistic and literary affinities, associated to a remarkable technical versatility. It is also in this way that his works are inscribed in our time, with the right dose of humor and poetry that are indispensable, especially now at a time when the artist has not had the opportunity to go to the studio, as usual.

The online exhibition **'The Confinement Drawings'** is **Jorge Nesbitt's** second solo presentation at the gallery.

For more information about the artist or this exhibition, please contact: info@rui-freire.com



THE CONFINEMENT DRAWINGS

Jorge Nesbitt

EXPOSITION ONLINE

15.05.20 – 13.06.20

“Tout à coup, j’ai trouvé fascinante l’idée de commencer un dessin sans savoir ce qui en sortira. En général, je travaille même sur deux dessins exactement pour cela. C’est parce que lorsque je commence un dessin, il semble parfois complètement impossible qu’il fonctionne au début. Quand cela arrive, j’arrête ce dessin, j’en commence un autre et quand je reviens à l’original, au premier dessin, des solutions de composition inattendues apparaissent généralement”

Jorge Nesbitt

La galerie **Rui Freire - Fine Art** est heureuse d’annoncer l’exposition en ligne **“The Confinement Drawings”** de l’artiste **Jorge Nesbitt**. L’exposition présente une sélection inédite de dessins au graphite, créés par l’artiste depuis le début de la pandémie mondiale de coronavirus.

Ce groupe d’œuvres a comme point de départ un ensemble de dessins de Picasso de la fin des années 1920, réalisés - à Cannes et à Dinard - pendant l’été. Ces dessins, de carnet de croquis, ont toujours fasciné Jorge Nesbitt, tant par leur inventivité formelle que par leur présence sculpturale.

Jorge Nesbitt a commencé par réaliser une série de petites figures d’argile composées de sphères superposées, de petits galets et de ce qui semble être des os lissés.

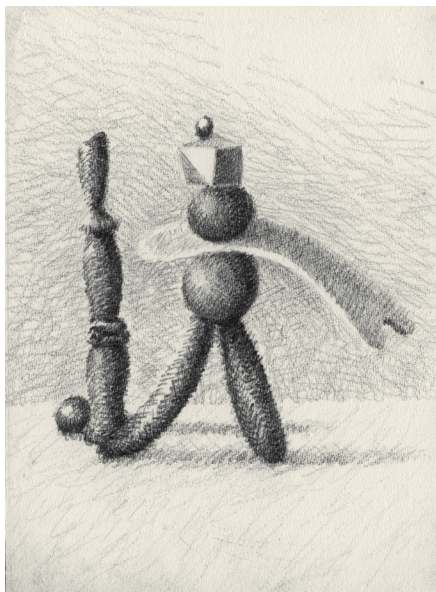
Ces formes-objets, étayées et empilées les unes sur les autres dans des arrangements précaires, créent un équilibre statique énigmatique qui rappelle les anciens dolmens et leur donne un aspect ludique, qui plaît particulièrement à l’artiste.

À partir de ces figures, Jorge Nesbitt commence à dessiner de mémoire dans un petit carnet de croquis, sans idée prédéfinie du résultat final. Ce processus s’avère propice à l’apparition de réponses formelles inattendues, exerçant une fascination particulière sur l’artiste.

C’est dans ce contexte particulier qu’émerge cet ensemble fascinant de dessins. L’originalité et le caractère très personnel de l’œuvre de Jorge Nesbitt naissent de cette combinaison complexe d’affinités artistiques et littéraires, associée à une remarquable polyvalence technique. C’est également de cette manière que ses œuvres s’inscrivent dans notre époque, avec la bonne dose d’humour et de poésie qui s’imposent, surtout actuellement.

L’exposition en ligne **“The Confinement Drawings”** est la deuxième présentation individuelle de **Jorge Nesbitt** à la galerie.

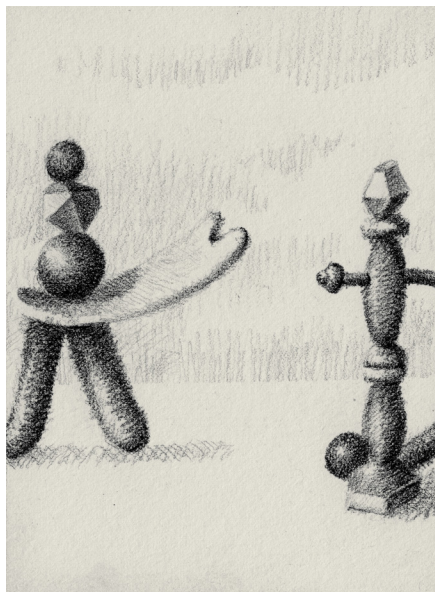
Pour plus d’informations sur l’artiste ou cette exposition, veuillez contacter: info@rui-freire.com



The Confinement Drawings, 2020

12 cm x 8.5 cm
4.7 in x 3.4 in

Grafite sobre papel / Graphite on paper
Graphite sur papier



The Confinement Drawings, 2020

12 cm x 8.5 cm
4.7 in x 3.4 in

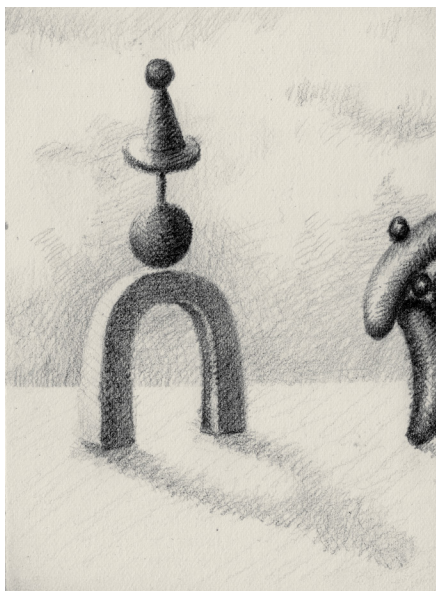
Grafite sobre papel / Graphite on paper
Graphite sur papier



The Confinement Drawings, 2020

12 cm x 8.5 cm
4.7 in x 3.4 in

Grafite sobre papel / Graphite on paper
Graphite sur papier



The Confinement Drawings, 2020

12 cm x 8.5 cm
4.7 in x 3.4 in

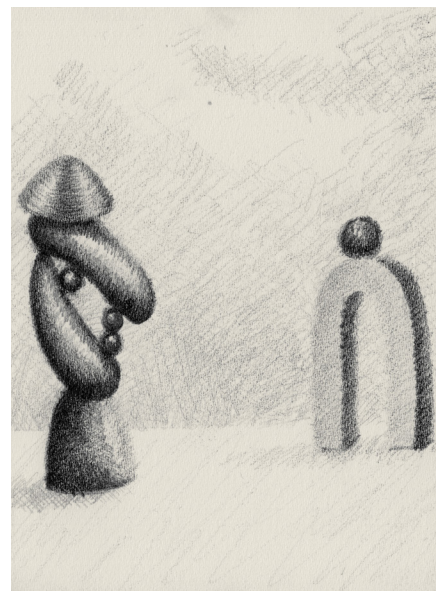
Grafite sobre papel / Graphite on paper
Graphite sur papier



The Confinement Drawings, 2020

12 cm x 8.5 cm
4.7 in x 3.4 in

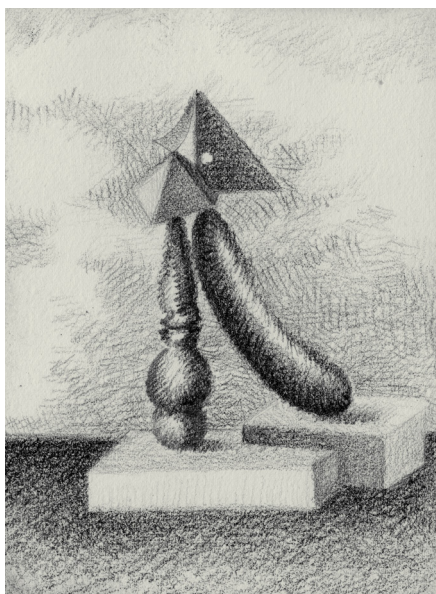
Grafite sobre papel / Graphite on paper
Graphite sur papier



The Confinement Drawings, 2020

12 cm x 8.5 cm
4.7 in x 3.4 in

Grafite sobre papel / Graphite on paper
Graphite sur papier



The Confinement Drawings, 2020

12 cm x 8.5 cm
4.7 in x 3.4 in

Grafite sobre papel / Graphite on paper
Graphite sur papier



The Confinement Drawings, 2020

12 cm x 8.5 cm
4.7 in x 3.4 in

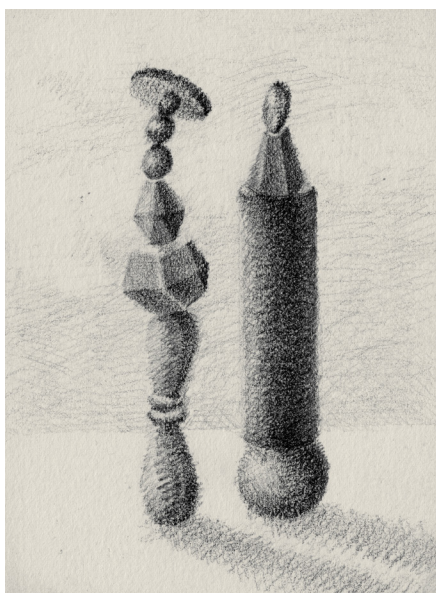
Grafite sobre papel / Graphite on paper
Graphite sur papier



The Confinement Drawings, 2020

12 cm x 8.5 cm
4.7 in x 3.4 in

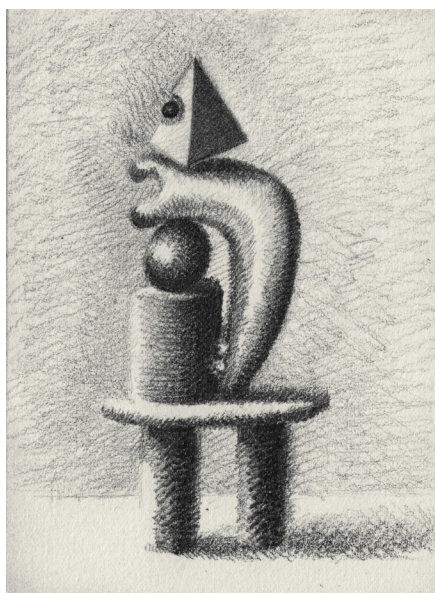
Grafite sobre papel / Graphite on paper
Graphite sur papier



The Confinement Drawings, 2020

12 cm x 8.5 cm
4.7 in x 3.4 in

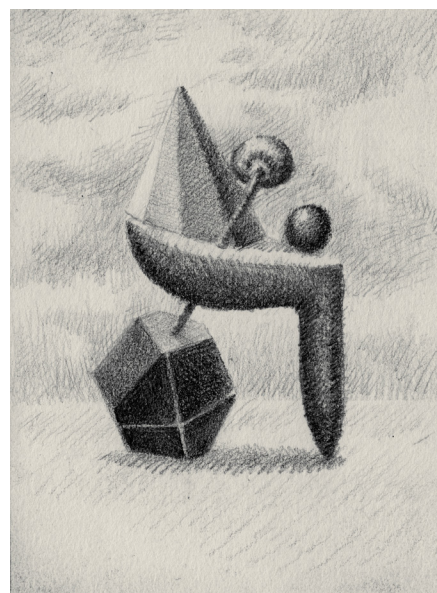
Grafite sobre papel / Graphite on paper
Graphite sur papier



The Confinement Drawings, 2020

12 cm x 8.5 cm
4.7 in x 3.4 in

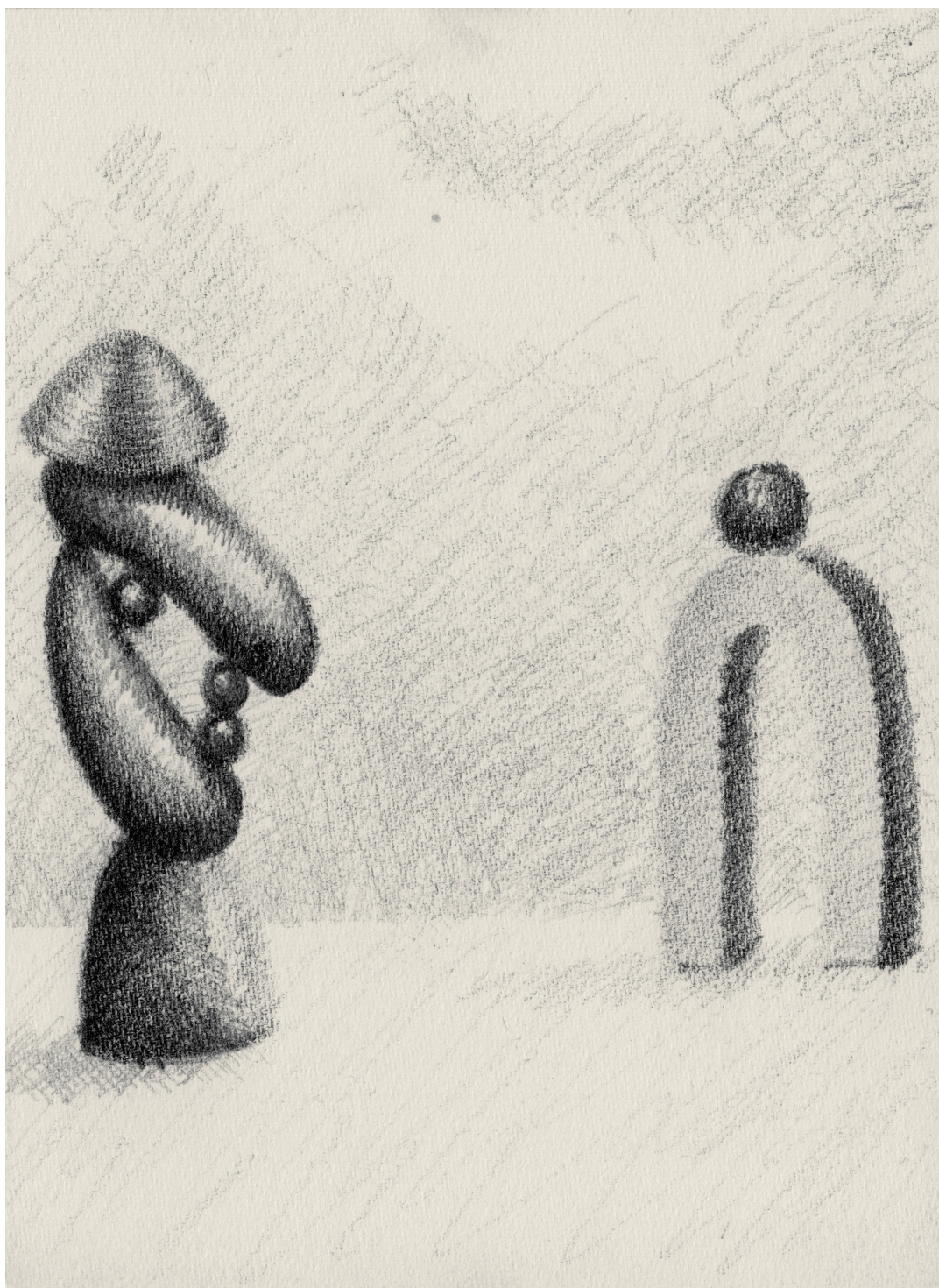
Grafite sobre papel / Graphite on paper
Graphite sur papier



The Confinement Drawings, 2020

12 cm x 8.5 cm
4.7 in x 3.4 in

Grafite sobre papel / Graphite on paper
Graphite sur papier



THE CONFINEMENT DRAWINGS

Jorge Nesbitt

EXPOSIÇÃO / EXHIBITION / EXPOSITION ONLINE

15.05.20 – 13.06.20